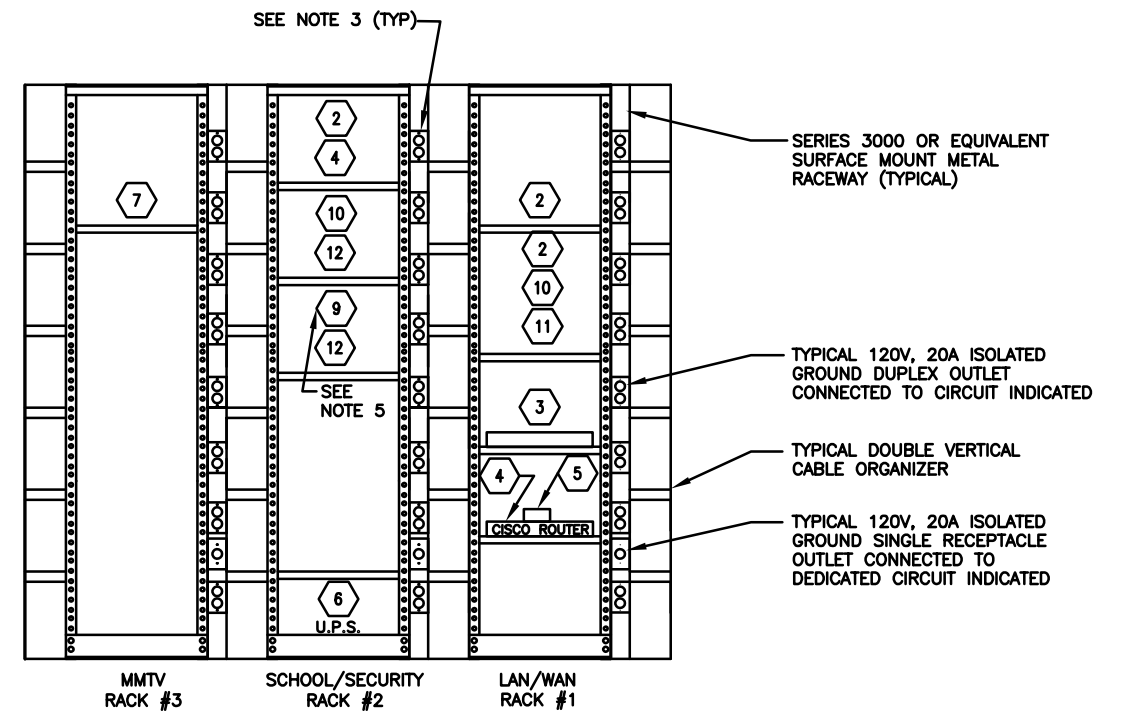


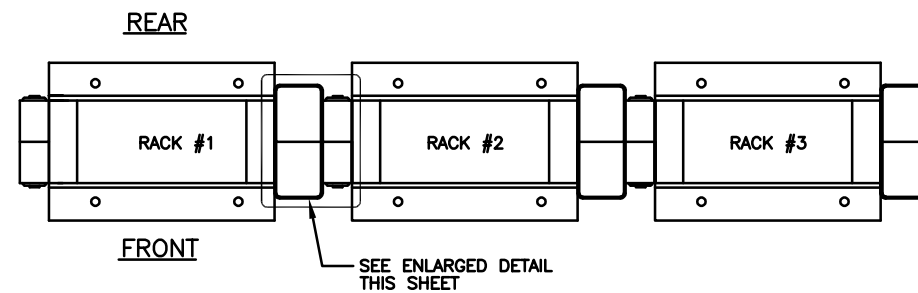
1 IDF DATA RACK
ED.102 FRONT ELEVATION

SCALE: NOT TO SCALE



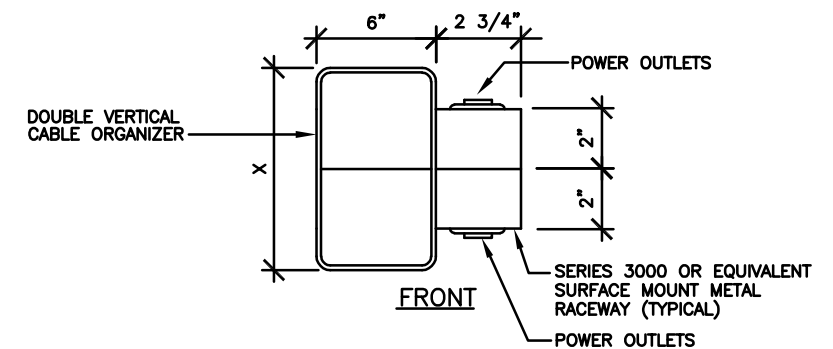
2 IDF DATA RACK
ED.102 REAR ELEVATION

SCALE: NOT TO SCALE
REAR



3 IDF DATA RACK
ED.102 TOP VIEW

SCALE: NOT TO SCALE



4 ORGANIZER SYSTEM
ED.102 TOP VIEW

SCALE: NOT TO SCALE

IDF RACK EQUIPMENT

ITEM #	DESCRIPTION	PROVIDED BY
1	(3) RACKS WITH (3) VERTICAL SECTIONS OF 6-3000 WIREMOLD RACEWAY, (4) DOUBLE VERTICAL CABLE ORGANIZERS, (48) ISOLATED GROUND DUPLEX RECEPTACLES, (4) ISOLATED GROUND SIMPLEX RECEPTACLES.	CONTRACTOR
2	FIBER OPTIC PATCH PANEL	CONTRACTOR
3	CATALYST SWITCH CISCO	CHICAGO PUBLIC SCHOOLS
4	CISCO ROUTER	CHICAGO PUBLIC SCHOOLS
5	MODEM	CHICAGO PUBLIC SCHOOLS
6	UPS	CONTRACTOR
7	MMTV COAX PATCH PANEL	CONTRACTOR
8	NOT USED	-
9	MID SPAN UNIT TO POWER CAMERAS	CONTRACTOR
10	CAT 6 MODULAR PATCH PANEL	CONTRACTOR
11	WIRE MANAGEMENT	CONTRACTOR
12	DVS SERVER	CONTRACTOR

NOTES:

1. THE ARRANGEMENT OF THE RACKS SHOWN ON THIS DRAWING ARE FOR GUIDANCE ONLY, THE NUMBER OF RACKS, THE ARRANGEMENT AND/OR THE LINEUP MAY DIFFER FROM THE ABOVE. FOR THE EXACT LAYOUT FOR A PARTICULAR SCHOOL, REFER TO THE MDF ROOM LAYOUT.
2. THE MATERIAL, COLOR AND HEIGHT OF THE RACK(S) SHALL MATCH EXISTING RACK(S) AT THE SCHOOL (IF APPLICABLE).
3. EACH 120V, 20A CIRCUIT, EACH WITH DEDICATED NEUTRAL, EQUIPMENT GROUND, AND ISOLATED GROUND (IG) CIRCUITS. ALL THESE CIRCUITS ARE TO BE CONNECTED TO 20A, 1-POLE CIRCUIT BREAKERS IN PANELBOARD IDF-1.
4. IDF ROOM FINISH FLOOR SHALL BE A STATIC-DISSIPATIVE TILE.
5. MID-SPAN PTZ POWER SUPPLIES DO NOT NEED TO BE RACK MOUNTED. THESE CAN SIT ON A SHELF OR ON TOP OF A SERVER OR SWITCH.
6. WHEN AIPHONE AX SERIES SYSTEM IS UTILIZE AT SCHOOL, AIPHONE CONTROL UNIT SHALL BE INSTALLED IN MMTV RACK.
7. 3-INCH WIRE MANAGERS CAN BE USED IN LIEU OF 6-INCH WIRE MANAGERS PER ACTUAL ROOM LAYOUT. FINAL DIRECTION SHALL BE PROVIDED BY CPS-ITS.

NO.	DATE	REVISION	BY

CHICAGO PUBLIC SCHOOLS CAPITAL IMPROVEMENT PROGRAM INFORMATION TECHNOLOGY SERVICES INFRASTRUCTURE STANDARDS STANDARD IDF ROOM RACK ELEVATIONS & DETAILS			
DESIGNED CPS DRAWN CPS CHECKED CPS APPROVED	PROJECT: DVS SYSTEM-DETAILS PROJECT NUMBER XXXX SCALE NONE DATE 03/30/16	SHEET NO. ED.130	