



EVERY CHILD READY CHICAGO WORKING GROUP

November 18th 2021



Icebreaker

What is your favorite holiday side dish?

Drop it in the chat!!

Community Agreements



- Speak your truth without blame or judgement.
- Listen attentively, with your eyes, ears, and heart.
- Notice moments of discomfort and stay curious.
- Be open to the experience of this time and space together and to each other.
- Keep information confidential.
- Create space for everyone to share.

EVERY CHILD READY CHICAGO VISION

Every child in Chicago can thrive within well-supported families, effective programs, and well-resourced communities so they grow strong, live joyful lives, and realize their greatest potential.



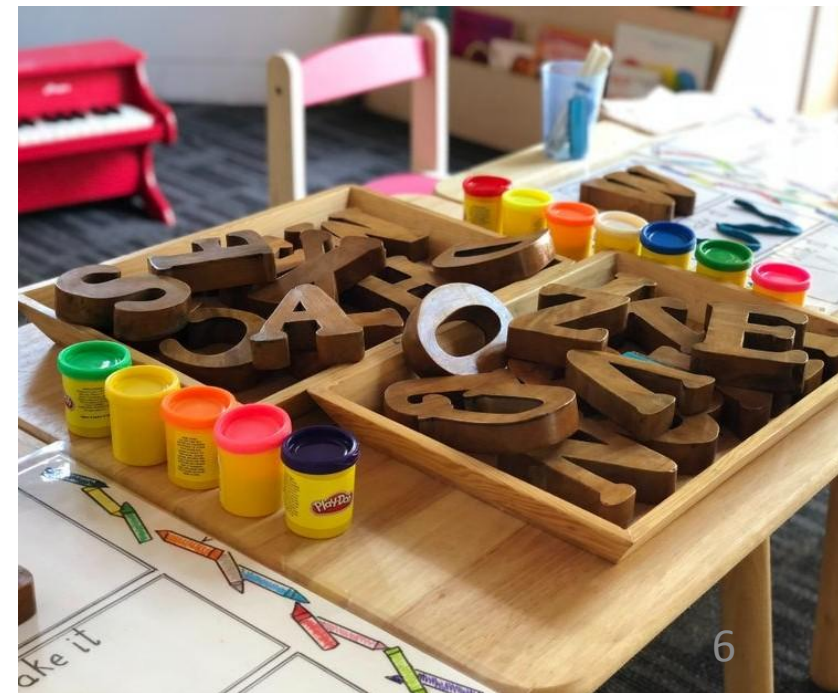
Meeting Overview



- **GOAL:** *To provide updates on the Federal landscape and potential implications on the State and City initiatives and planning efforts.*
- **AGENDA:**
 - Illinois Transformation Team
 - Federal Updates
 - Early Childhood Planning Council Updates
 - Alignment with ECRC
 - Family Engagement Strategy Updates
 - City Updates

Federal Updates

Illinois Transformation Team





Build Back Better Act

*This Changes Everything!
(Except what we were already working to create)*

Child Care

- This bill creates an entitlement to child care services for children under age 6 (and not yet in kindergarten) in eligible families.
- States that participate in the funding stream will be required to commit to serving all federally eligible children by October 1, 2024.
- Eligibility is by income and parents' work status (with broad definition of eligible activities for parents); parents with income above 75% of SMI will pay a co-payment of 2-7% of their income

Federal FY	% of SMI	Example max for IL—fam of 3	Approx % of IL children this is
2022	100	\$84,984	62%
2023	125	\$106,230	72%
2024	150	\$127,476	80%
2025-27	250	\$212,460	90%

Universal Preschool

- This bill creates an entitlement to preschool for children ages 3 or 4 by the school-entry cut-off day (Sept 1 in Illinois).
- The program must be full-school-day—providing at least 1,020 hours of program time per year.
- Eligibility is to be determined only by the age of the child.
- The program must be free for families.
- Must be a mixed-delivery system.
- The state must prioritize expansion in “high-need communities”



The potential new federal funding aligns very well with the recommendations from the Funding Commission

Funding Commission	Federal Proposal
Use cost modeling to inform funding goals and rates	Requires cost modeling to inform rates
Include expectation of salary parity with K-12 in cost models	Requires support for salary parity with K-12 (for similar qualifications) in funded programs
Create multi-year plan to increase public investment	Requires planning to scale up access to high-quality services
Invest in quality improvement to raise all settings to high-quality standards	Provides funding to build the supply of quality programs
Ensure equitable access through formulas	Must scale up universal preschool in low-income communities first; must fund programs to provide comprehensive services as needed
Transition over time to comprehensive contracts that provide stable and adequate funding	Encourages contracts, and requires states to develop stable and adequate funding for programs
Provide start-up and incubation funding to expand access in high-need communities	Provides funding for program start-up, including capital funding
Create Regional/Local governance structures	Must ensure a mixed-delivery approach to growing access to high-quality preschool and child care

Timeline and Planning

- Legislation (as drafted) is over six years, with the first year being FY22
 - First three years are 'grants' to states with no required match
 - Subsequent three years are 90% match for child care, 60% match for PreK
- IDHS, ISBE, GOECD, DCFS already working together with ECTT to anticipate impact on Illinois programs and current funding
 - Deep-dive meetings to consider implications now and in the future
 - Alignment with the Early Childhood Funding Commission recommendations
- ECTT working with GOECD and state agencies to engage stakeholders as we move forward (pending passage of the legislation)
 - Build Back Better provides IL 'wind beneath our wings' to move forward
 - Leverage already-existing bodies & Early Learning Council to inform planning



A young child with short brown hair, wearing a teal jacket and pink pants, is walking away from the camera on a gravel path. In the background, there are other people, including a man in a blue shirt and a woman in a red top, and some trees. The scene is outdoors and appears to be a park or a play area.

Early Childhood Planning Councils Illinois Transformation Team



Update on Regional & Community Systems

- Hired Cicely Fleming as State Director of Regional & Community Systems.
- Name change: We are moving from Regional Councils to **Early Childhood Planning Councils**. A better description of the councils work (will still share geographic boundaries of ROE's)
- Statewide virtual Early Childhood Planning Councils kick-off in early Feb with a week of public 'townhalls' by region including Closed Captioning and Spanish language.
- Convened focus groups (Communications, Racial Equity, Local Collab Funding) made up of ELC Community Systems Subcommittee members. Gathered input will be incorporated into our work.
- Contracted IAFC/CS3 team to provide Technical Assistance & Training for Planning Council Staff. They have also been supporting the Council Kick-Off Week Planning.
- To ensure full state coverage, we contracted 6 Area Coordinators to increase our "boots on the ground" work and develop relationships.
- State office capacity building with new staff including Dir of Operations, Communications Manager, Family & Community Engagement (TBD), & Grants & Community Relationships (TBD).
- Working with communications firm to develop a web presence, concise and accurate messaging, clear and transparent multi-medium materials.

Steering Committee = Early Childhood Planning Council

Key functions of Early Childhood Planning Council

Goal: Establish greater equity in our ECE system

Priorities

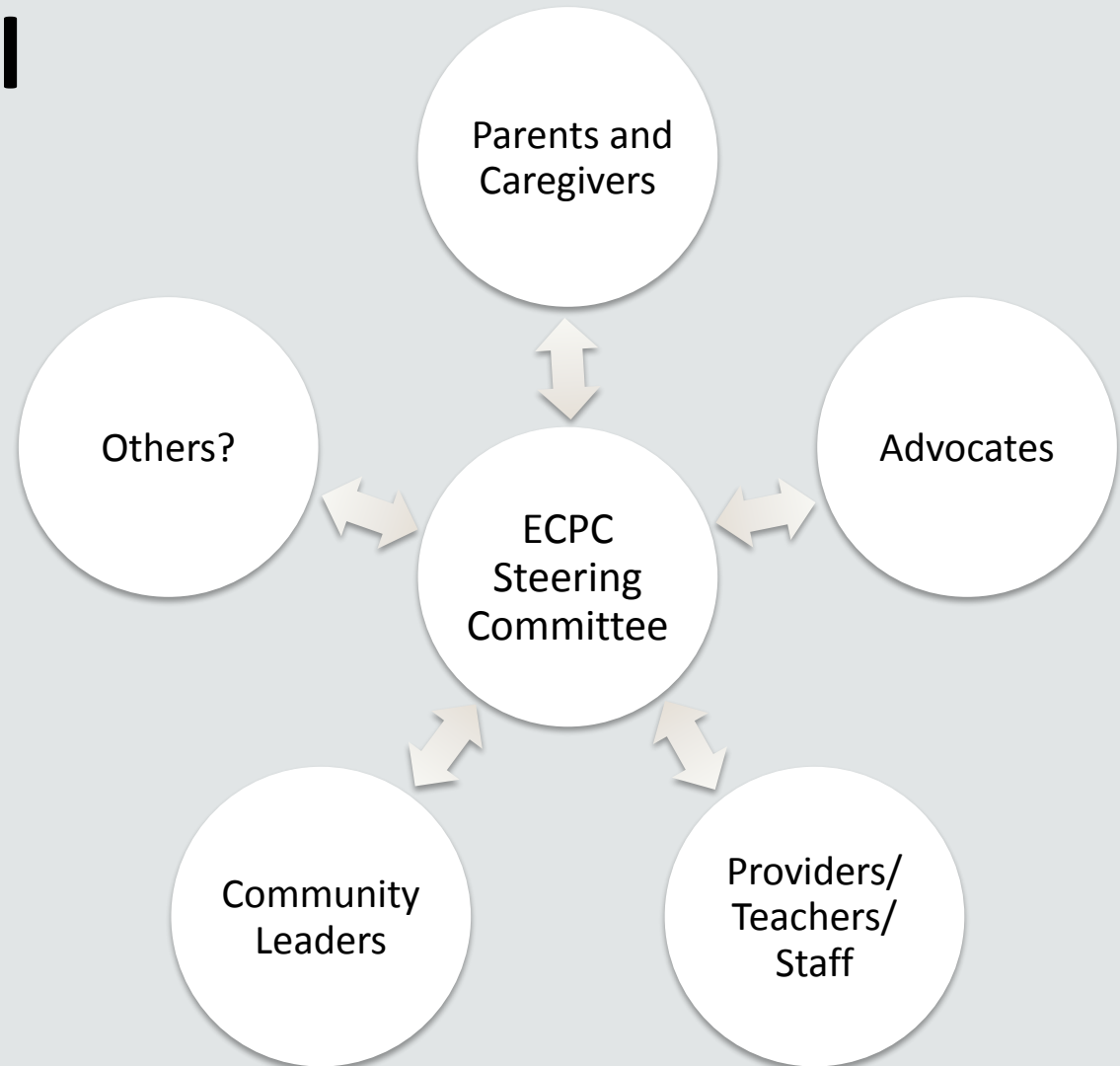
- Coordination: Build a statewide infrastructure to inform governance and financing of ECE services
- Alignment: Establish methods to document supply/demand data
- Planning: Better prepare communities for expansion of ECE by improving data, understanding preference, increasing program coordination, funding & quality standards
- Engagement: Authentic family voice in the planning & policy design

Every Child Ready Chicago will serve as the Early Childhood Planning Council for Chicago...

Shared Guiding Principles	Strategies
<p>Diverse Representation of EC Stakeholders (Membership)</p>	<ul style="list-style-type: none"> ● ECPC: 15-20 member planning council ● ECRC 15-20 steering committee & 30-40 council (28 affirmative responses to survey)
<p>Intentional Family Engagement</p>	<ul style="list-style-type: none"> ● ECPC: Family Council ● ECRC: 20% of family representatives (6-8 caregivers across council); Stipends for participation for caregivers; Training for all to build inclusive spaces; Translation of meetings and materials; Exploring development of Family Council/Network
<p>Structure & Governance</p>	<ul style="list-style-type: none"> ● ECPC: Enrollment data analysis and advisory council to state ● ECRC: Broader, inclusive prenatal to 5 Chicago systems focus
<p>Strategic Planning Process</p>	<ul style="list-style-type: none"> ● ECPC: First year Strategic plan focused on enrollment ● ECRC: Completed an initial landscape and strategy map; holistic prenatal to 5 scope

★ Hub and Spoke Model

- Steering Committee of 15-20 representatives from Affinity groups
- Affinity groups representative of key groups in the ECE field

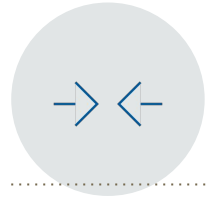


There are key, underlying pain points to address:



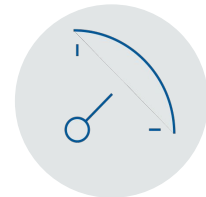
Membership

- Steering Committee = EC Planning Council?
- Concerns on accountability and oversight / role of full council



Governance and Staffing

- The State has staffing funding for each council. How is this maximized in our current structure?
- Project management team-How do we fund broader participation?



Strategic Planning Process

- Narrow Focus on Access vs initial Birth to Five Focus

Large Group Discussion



What should we keep in mind as we create a balanced, representative membership without expanding its size significantly?

What strategies and/or safeguards can we put into place to balance the States and the City's interests and needs?

What strategies should we consider in the short term to mobilize communities to be ready to inform the early childhood planning councils?

Next Steps

- The State & Chicago team will reconvene to process and incorporate your input
- December, we will follow-up with any plan updates
- January, begin the work of engaging the working group on Planning & Family Council membership





Family Engagement Strategy

Family & Community Engagement Committee



NAME	GROUP	EXPERIENCE
Lynette Kelly Bell	A House in Austin	Administrative Officer, Parent
Julissa Cruz	Carol Robertson Center	Director of Community Based Advocacy
Shontiesha Mores-Floyd	COFI	Parent Representative
Guadalupe Mondragon	COFI	Parent Representative
Jesse Rojo	COFI	Organizer
Eva Espana	Gads Hill Center	Parent Engagement Specialist
Krystal Ross	Gads Hill Center	Director of Early Childhood
Nicole Craft	GOECD	Deputy Director
Janet Vargas	IAFC	Parent Trainer & Coach
Dena Chapman	IAFC	Community Engagement Associate
Rosario Hernandez	Latino Policy Forum - Acuerdos	Education Policy Analyst
Nataly Barrera	Office of the Mayor	Acting Director of Early Learning
Krystal Wise	New Moms	Director of Family Support
Carmen Garcia	Start Early	Policy Specialist
Kyrsten Emanuel	Start Early	Policy Manager
Linda Francis	Start Early	Project Director

Family & Community Engagement Status



Deliverables

1. Design a model, for engaging parent networks in the work of ECRC, that is intentional, effective, non-burdensome, and sustainable
 - **Application**
 - **Roles & Responsibilities**
 - **Required Resources**
 - Working on hybrid Family Council and integrated model details
 - Working on cost model

2. Build strong relationships with community-based organizations working directly on ***connecting parents*** pre-natal to 5
 - **Met with (7) existing programs to connect and understand needs**
 - **Capacity building for emerging programs**
 - Working on model for ongoing engagement/networking to also include E/HS and other existing councils



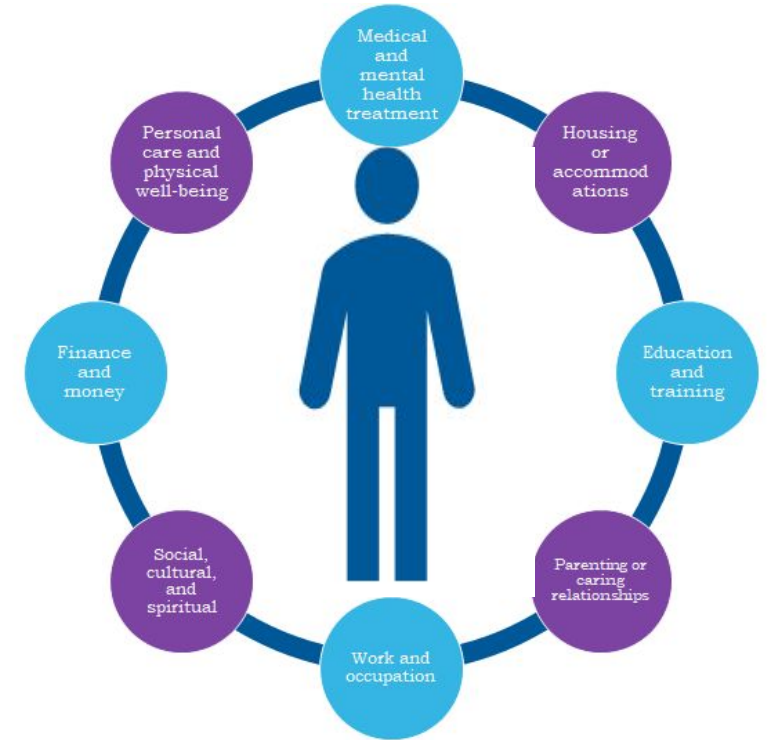
Budget Updates



Budget Highlights

\$16.7 billion Budget

- **Cash assistance:** \$31.5 million pilot program to give \$500 in monthly direct cash assistance for hard hit, low-income households in need of additional economic support.
- **Community Health Navigators:** \$10M for Community Health Workers (CHWs) to reduce racial/ethnic and place-based disparities to health by improving access to city resources and health care.
- **Mental Health:** \$6.3 Million for the city's five mental health clinics to launch child and adolescent mental health services, expand evening hours at the clinics and support 29 staff positions
- **Housing:** \$157 Million to Invest in new housing units and existing homes to provide affordable housing opportunities – including investments in mixed-use development, supporting families that seek to remain in their home, helping residents become homeowners, lead paint abatement and other owner-occupied repairs
- **Violence Prevention:** \$85 million in violence prevention efforts including youth intervention and victims supports.
- **Family Connects:** \$25 Million to expand supportive in-home healthcare services to new moms to improve maternal health outcomes of mothers and infants



- **Chicago Early Childhood Integrated Data System (CECIDS)** \$539,000
- **Chicago Early Learning Workforce Scholarship-** \$3,470,000
- **CEL umbrella services:** Over \$3million to maintain Early Learning Hotline, CEL application, and marketing and messaging strategies.

Looking Ahead





Upcoming Events

- **Family Engagement Strategy Meeting** –December 3rd. 9am
 - Zoom Meeting
<https://zoom.us/j/9471604820?pwd=VHd1Qldnbzh4bGVreUR5UXVDU3dIZz09>
- **Walgreens will be holding another “*Special Peds Day*”** at 7 stores on Saturday, November 20th through out the city. Flyers to be in your inbox soon.
- **Infant and Toddler Child Care Road Map- Community Conversation- December 7th 1-3pm**
 - Examines the current supply, demand, and impact of infant-toddler child care on family well-being and the economy.
 - Community conversations around the state to share findings and reflect with communities on their implications.
 - Input received from the community conversations will be integrated into a final report detailing the project’s findings and recommendations and shared with the Raising Illinois Family and Center-Based Care Committee for final approval before being submitted to the Illinois Governor’s Office of Early Childhood Development by the end of December 2021